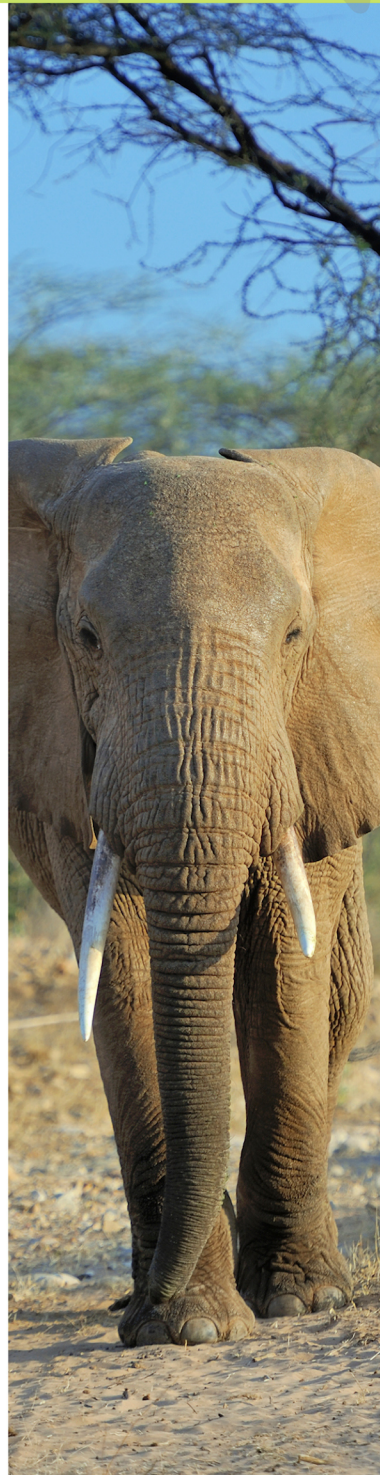
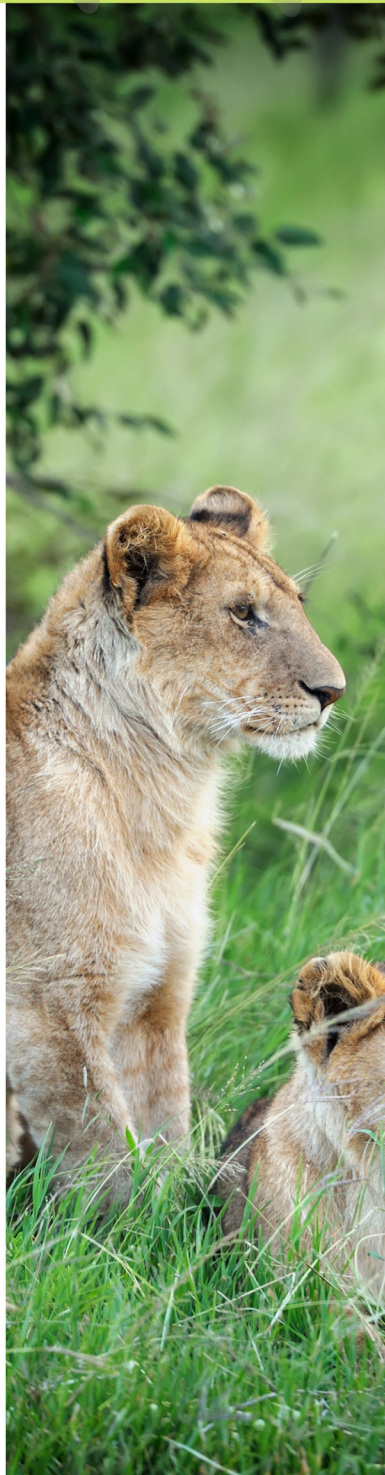


Start Reading

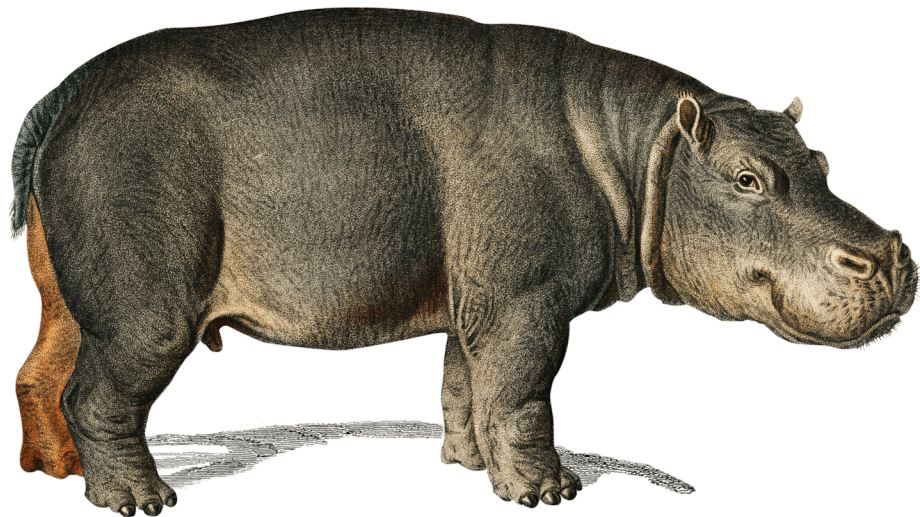


Animals





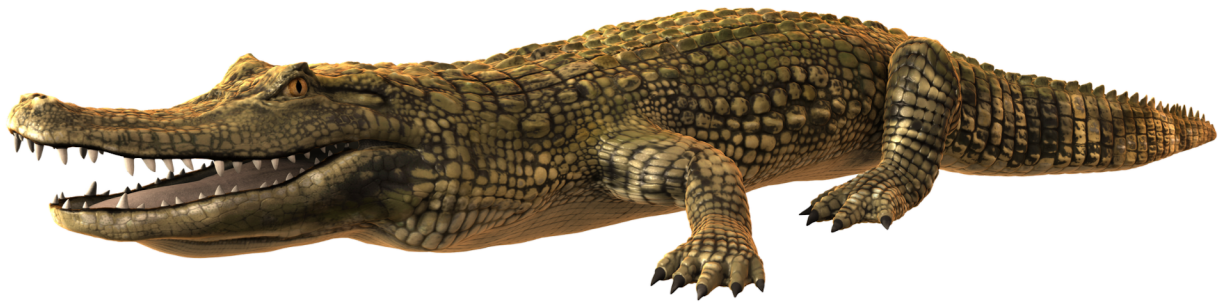
An owl is a type of bird. It has a round head and a flat face. It has a short beak that is curved downwards. Owls can have brown, gray, white, or black feathers. They are found all over the world except Antarctica. They like to live in places with trees such as forests. They make their nests in trees. Owls are carnivores and eat small animals like rats, frogs and insects.



A hippopotamus or a hippo is a very large African mammal with a huge barrel-shaped body, short legs, a short tail and an enormous head. It has greyish to muddy-brown skin. It has a large mouth, small nostrils, and its eyes are located high up in the head. Hippopotamuses love water and spend most of the time submerged in it. They are herbivores and eat grass.



Eagles are large and powerful birds of prey. Birds of prey are birds that attack and eat other animals. Eagles have large, hooked beaks and powerful legs with strong sharp claws. They have amazing eyesight and can see 3 to 4 times better than humans. They normally build their nests in tall trees or on high cliffs. Eagles are found all over the world but the bald eagle with its white head and brown body is found only in North America.



Alligators are very large reptiles.

They have long, round snouts, huge jaws, scaly skin, and sharp claws. They live in ponds, marshes, rivers and lakes. They eat fish, turtles, and even deers.

Alligators are only found in the United States, Mexico, and China. Crocodiles look similar to alligators but they have a more pointed snout. Crocodiles live in the tropical regions of Africa, Asia, Australia, and the Americas.



Bats are the only mammals on Earth that can fly. They look like mice with wings. There is a layer of skin or webbing between the fingers of their front limbs. They flap their spread-out fingers or wings to fly.

While flying, bats send out noise and then wait for the sound to bounce back once it has hit an object. If nothing bounces back, it shows them it is safe to keep flying forward. Bats are nocturnal and come out at night to eat insects. They like to live in dark places like caves.



Giraffes are the tallest land animals on Earth. They have very long necks and long legs. They have yellow or off-white fur with brown patches. They have small knobs on their heads, which are covered with skin and fur. Giraffes are herbivores. They have a long black tongue which they use to wrap around leaves and pull them off trees. Giraffes live in grasslands in Africa. They can even sleep while standing up for a short time!



Beavers belong to the same family as rats. They have dark-brown fur, webbed feet for swimming, and thick, paddle-like tails. They use their big, sharp teeth to cut down trees. These trees are used to dam streams and make ponds. Beavers like to build their homes in the middle of these ponds as the water protects them from predators like wolves. They can swim underwater for 15 minutes! They eat the bark and stems of trees.



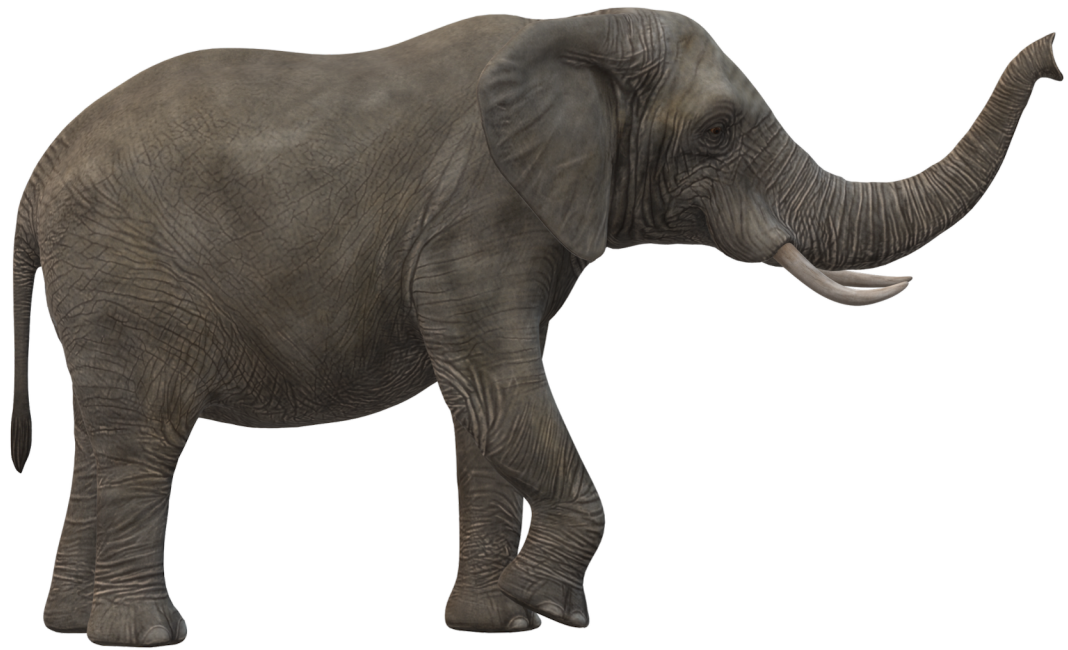
A wolf belongs to the same family as a dog. It has long muzzle, short ears, long legs, and a long bushy tail.

The fur of a wolf can be gray, black, brown, or white. Wolves are carnivores and live in forests, deserts, and even the Arctic.

They are very social animals. They live and hunt together in groups called packs. They make a noise called a howl to talk to each other.



A turtle is a reptile just like lizards and snakes. It can be easily identified by its unique round shell, from which its head and legs stick out. This shell protects the turtle. Turtles have webbed feet with long claws for swimming. They live in the water and only come on land for laying eggs. They are omnivores and eat both meat and plants.



The elephant is the largest living animal on land. It has very long nose called a trunk. It has large, thin ears and two big teeth called tusks. It uses its tusks for digging and collecting food. It also uses them for protecting itself from attackers. Elephants are grayish to brown in color. They are herbivores and eat grass, leaves, fruits, and tree bark. They live in Africa and Asia.



A panda is a large bear-like animal. It lives in the mountains of China. It has black fur on its ears, eye patches, muzzle, legs, arms, and shoulders. The rest of its coat is white. The thick, wooly coat helps to keep it warm in its cool mountain homes. A panda eats bamboo, shoots and leaves.



A lion is a large, four-legged carnivorous animal that belongs to the cat family. It has a powerful body, strong flexible legs, and sharp claws. Its body is covered with yellowish-brown fur. A male lion has a large mane of darker colored fur around its head and neck. A lion is considered the king of the jungle as it is ferocious hunter. Lions live in Africa.